

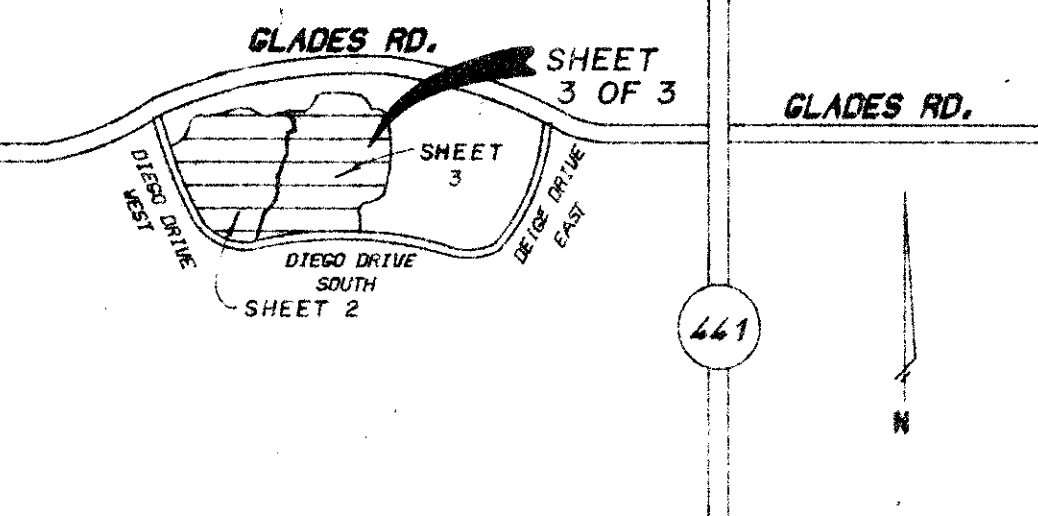
53/194

194

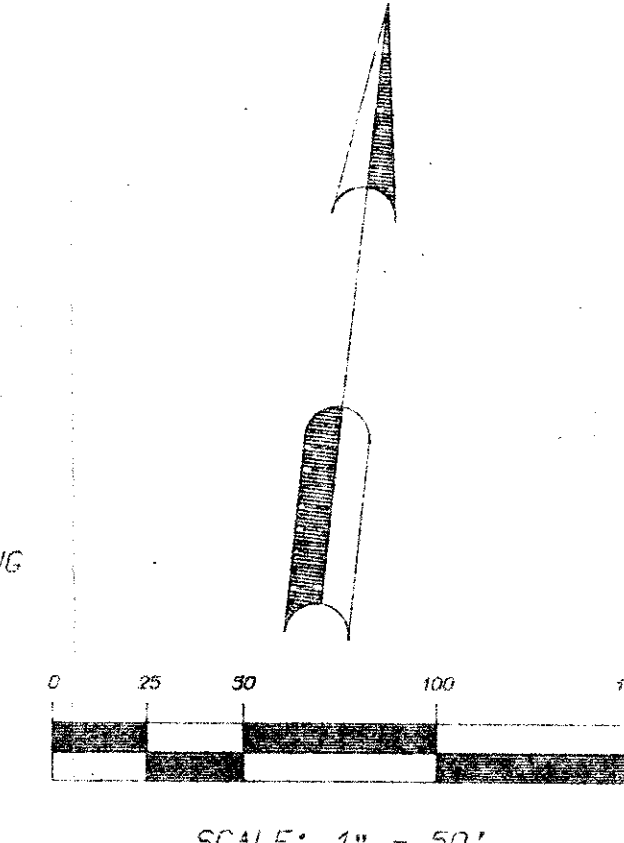
# TRACT G

A REPLAT OF ALL OF TRACT G OF THE PLAT OF MISSION BAY A P.U.D. AS RECORDED IN PLAT BOOK 53, PAGES 112-120, OF THE PUBLIC RECORDS OF PALM BEACH COUNTY, FLORIDA. SECTION 13, TOWNSHIP 47 SOUTH, RANGE 41 EAST

SHEET 3 OF 3 JANUARY, 1986

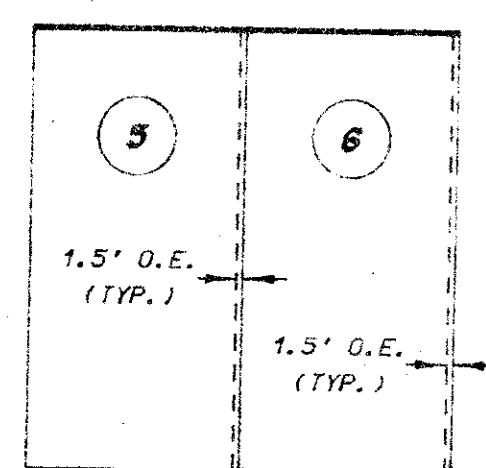


LOCATION MAP N.T.S.

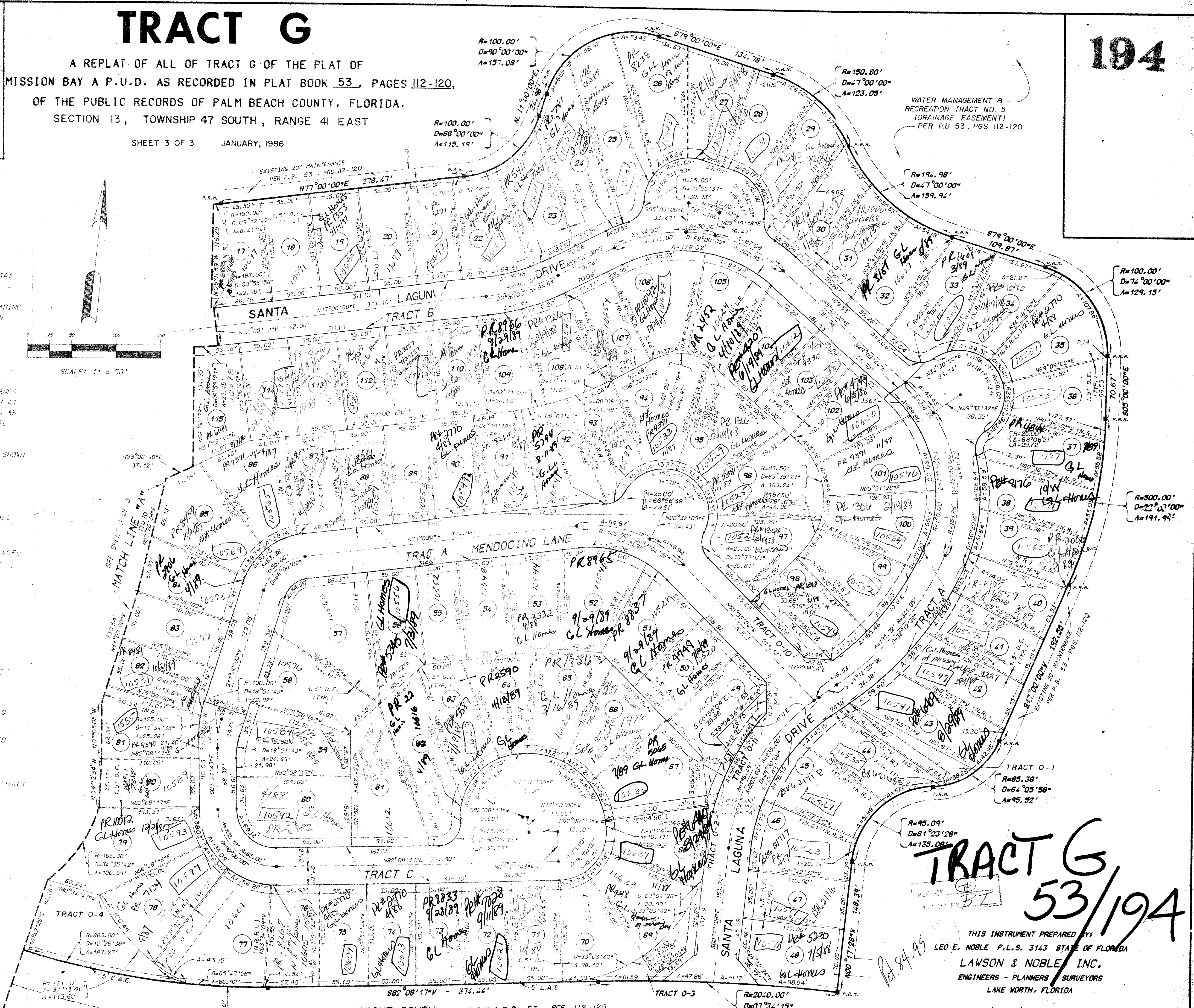


### SURVEYOR'S NOTES

- 1.) ALL P.R.M.'s BEAR THE REGISTRATION NUMBER 3143 SHOWN THUS - ■
- 2.) THE BEARINGS SHOWN HEREON ARE BASED ON A BEARING OF N.00°54'39"W. ON THE EAST LINE OF SECTION 13-47-41.
- 3.) D.E. - INDICATES A DRAINAGE EASEMENT.
- 4.) S.S. - INDICATES A SANITARY SEWER EASEMENT.
- 5.) ROADWAYS WITHIN THE PLAT OF FLORIDA FRUIT LANDS COMPANY'S SUBDIVISION NO. 2 OF SECTION 13-47-41 WERE ABANDONED PER RESOLUTION NO. R-84-1932, AS RECORDED IN BOOK 4436, PAGE 1770-1773, PUBLIC RECORDS OF PALM BEACH COUNTY, FLORIDA.
- 6.) ALL P.C.P.'s (PERMANENT CONTROL POINTS) ARE SHOWN THUS - ●
- 7.) L.A.E. - INDICATES A LIMITED ACCESS EASEMENT.
- 8.) NO EXISTENCE OR ANY KIND OF CONSTRUCTION SHALL BE PLACED ON UTILITY OR DRAINAGE EASEMENT.
- 9.) THERE SHALL BE NO TREE OR SHRUBS PLACED ON UTILITY EASEMENTS WHICH ARE PROVIDED FOR WATER AND SEWER USE OR UPON DRAINAGE EASEMENTS.
- 10.) O.E. - INDICATES OVERHANG EASEMENT.
- 11.) D - INDICATES CENTRAL ANGLE.
- 12.) A - INDICATES ARC DISTANCE.
- 13.) R - INDICATES RADIUS.
- 14.) (N.R.) - INDICATES NON-RADIAL LOT LINE.
- 15.) (N.R.R.L.) - INDICATES LOT LINE NON-RADIAL TO REAR LOT LINE.
- 16.) (N.R.F.L.) - INDICATES LOT LINE NON-RADIAL TO FRONT LOT LINE.
- 17.) U.E. - INDICATES UTILITY EASEMENT
- 18.) LANDSCAPING ON OTHER UTILITY EASEMENTS SHALL BE ALLOWED ONLY AFTER CONSENT OF ALL UTILITY COMPANIES OCCUPYING SAID



TYPICAL LOT FOR OVERHANG EASEMENT



# TRACT G

## 53/194

THIS INSTRUMENT PREPARED BY:  
LEO E. NOBLE P.L.S. 3143 STATE OF FLORIDA  
LAWSON & NOBLE, INC.  
ENGINEERS - PLANNERS SURVEYORS  
LAKE WORTH, FLORIDA

0454-007

DRAWING NUMBER

DRAWING NUMBER

DRAWING NUMBER

PLAT HOLD CORPORATION • IRVINE, CALIFORNIA  
RECORDED BY NUMBER 0754

PLAT HOLD CORPORATION • IRVINE, CALIFORNIA  
RECORDED BY NUMBER 0754